

AWAP020-86

Enterprise 802.11 a+g Turbo

Dual Band Outdoor Access Point



AWAP020-86 is a enterprise class dual band wireless Access Point.

AWAP020-86 dual band Access Point provides easy management and has the capabilities to give your wireless mobile workforce the best service in continuous industry-standard access to corporate network resources.

Fully compliant with IEEE 802.11g (2.4GHz) & IEEE 802.11a (5 GHz) and backward compatible with 802.11b, this is the future-proof and cost effective way to quickly set up a new wireless network or extend an existing Ethernet network.

AWAP020-86 build in the PoE easy for customer to install without worry a Power plug.

AWAP020-86 also support the new **QoS** standard WMM function.

FEATURES

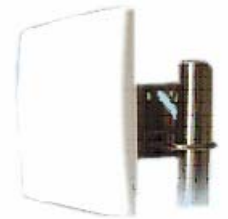
- High Speed-Provides "turbo mode" data rate speeds up to 108Mbps
- WDS Bridge feature-Supports AP , Bridge and Root Bridge and Repeater connections.
- 802.1x port-based authentication protocol is supported with extensible Authentication Protocol (EAP) MD5, Transport Layer Security (TLS), Protected EAP (PEAP) and Tunneled TLS(TTLS) for AP security
- Supports new QoS standard Wi-Fi Multimedia (WMM) and IEEE 802.11e
8 queues with strict priority scheduling
Classification: SA, DA, Ether Type, IEEE 802.1p tag
- Supports IEEE 802.1D Spanning Tree Protocol
- VLAN support for up to 64 groups and 8 Virtual AP (Multiple SSID)
- **Support IP management: Any IP / Single IP / Multiple IP to access device.**
- **Support RADIUS Server**
- Support SMNP v1,v2,v3
- Support DHCP for IP address assignment
- Support DHCP relay

SPECIFICATION

Ethernet LAN	One 10/100Base-T/TX RJ-45 port (Supports IEEE 802.3af Power Over Ethernet)
Antenna	2*N-type Antenna connectors
Standard	IEEE 802.11a 802.11b and 802.11g for WLAN
Frequency Bands	IEEE 802.11a 5.15~5.25GHz (lower band) for US / Canada, Japan 5.25~5.35 GHz (middle band) for US / Canada 5.725~5.825 GHz (upper band) for US / Canada 5.50~5.70GHz for Eurpe IEEE 802.11b/g 2400~24835 MHz for US, Canada, and ETSI 2400~2496MHz for Japan
Modulation Tech	IEEE 802.11a: BPSK, QPSK, 16-QAM, 64-QAM IEEE 802.11b/g: CCK, BPSK, QPSK, OFDM
Media Access Protocol	CSMA/CA with ACK
Receive Sensitivity	802.11a: 6Mbps 10-5 BER @ -88dBm; 54 Mbps 10-5BER @ -67dBm 802.11g: 11Mbps 10-5 BER @ -80dBm; 54 Mbps 10-5 BER @ -65dBm
Data Rates	IEEE802.11a: 6/9/12/18/24/36/48/54 Mbps Up to 108Mbps (turbo mode) IEEE 802.11g: 6/9/12/18/24/36/48/54 Mbps Up to 108Mbps (turbo mode) IEEE 802.11b: 1/2/5.5/11 Mbps
Security	IEEE 802.1x Authentication Access Control with Key Rotation WEP security: 64/128/152 bits , Local MAC address filtering Radius client support , ACL / WPA and AES / SSH
Number of Channels	802.11a: 12 channels in base mode (US, Canada) 5 channels in Turbo mode (US, Canada) 4 channels (Japan) 11 channels in base mode (Europe) 4 channels in Turbo mode (Europe) 802.11b/g: 11 channels in base mode (US, Canada) , 13 channels (ETSI), 14 channels (Japan)



Omini Antenna



panel Antenna

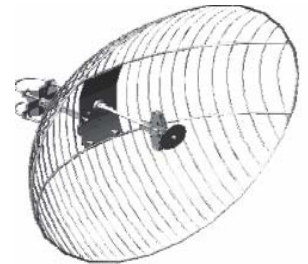


Yagi Antenna

Management	<p>QoS (WMM)</p> <p>VLAN support up to 16 group</p> <p>Web Interface</p> <p>Telnet, CLI</p> <p>SNMP v1</p> <p>Event Logging</p> <p>Syslog RFC 3164</p> <p>Supports DHCP client for IP address assignment</p> <p>Configuration file upload/download</p> <p>System Watchdog</p>
MIB Support	RFC1213 MIB-2
Transmit Power	15~20dBm
Software version	V 3.0.0.3
Power Adapter	Input 5V DC, 3A
Power over Ethernet	Input voltage 48V / 0.35A
Package contents	<p>11a+g outdoor AP</p> <p>One CD-ROM User Guide</p> <p>One POE Adapter</p> <p>One set Mounting kit</p>



Sector Antenna



Grid Antenna